

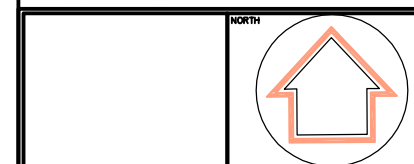
NOTES:
 1. DO NOT SCALE DRAWINGS.
 2. ALL WORK AND MATERIALS TO BE IN COMPLIANCE WITH ALL LOCAL CODES, BYLAWS AND REGULATIONS.
 3. ALL LUMBER PROVIDED BY DAC WILL BE BORATE AND HEAT TREATED.
 4. ADDITIONAL DRAWINGS MAY BE ISSUED FOR CLARIFICATION TO ASSIST THE PROPER EXECUTION OF WORK. SUCH DRAWINGS WILL HAVE THE SAME MEANING & INTENT AS IF THEY WERE INCLUDED.
 5. THIS DRAWING IS THE EXCLUSIVE PROPERTY OF "DAC INTERNATIONAL" AND SHALL NOT BE REPRODUCED OR USED WITHOUT WRITTEN AUTHORISATION.

HQI (Core Areas)

MIN REQUIRED:
 Unit = 41
 Layout = 32
 Services = 22

ACTUAL:
 Unit = 67
 Layout = 64
 Services = 75
 GIFA = 78.60 sqm (4.8%)

The Housing Corporation has not verified the HQI score and the HQI score is to be assessed for each individual development.



| | | |
|------|--|----------|
| A | Housing Corporation audit check amendments | 21.02.08 |
| Rev. | ITEM | DATE |

REVISIONS



3140 CARP ROAD, OTTAWA, ONTARIO
 CANADA K0A 1L0
 TEL: +1-613-839-0888
 FAX: +1-613-839-0939
 e-mail: dac@dac.ca

CLIENT/PROJECT NAME:

DAC 2.2 (N)

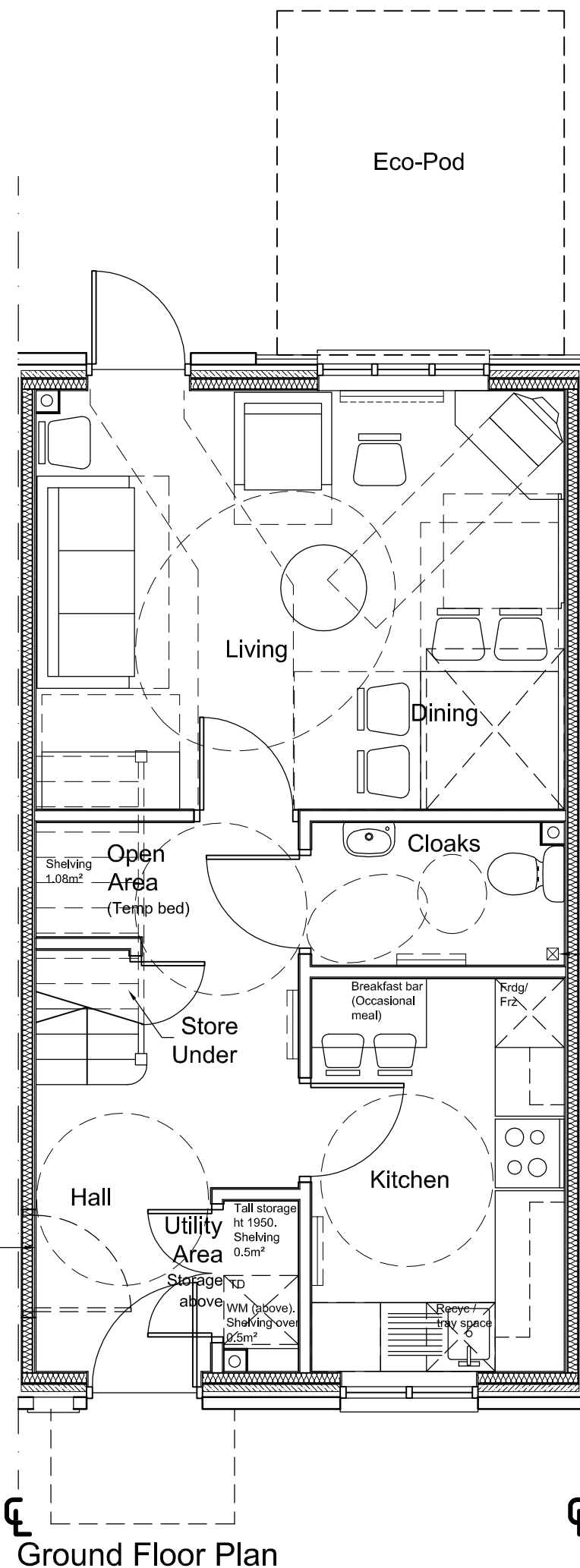
PROJECT NUMBER:

WO17 - 06

DRAWING NAME:

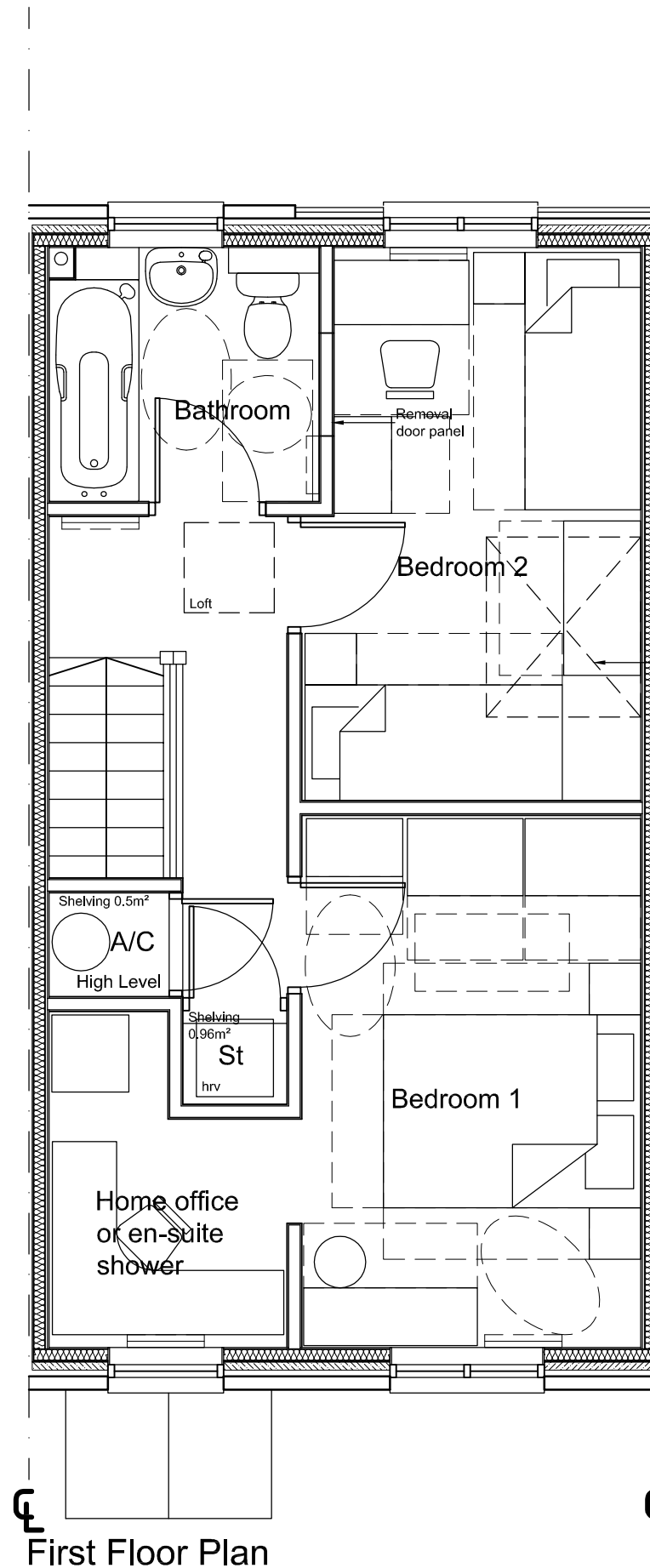
FURNITURE LAYOUT

| | | |
|--------------------|---------------------|-----------------|
| SCALE: | DESIGN FOR: | DRAWING NUMBER: |
| 1:50 | DAC INT'L | 2.2 (N) |
| DATE DRAWN: | CHECKED BY: | |
| DEC 2006 | P.M. | |
| DESIGN & DRAWN BY: | LAST REVISION DATE: | |
| GJT | 21/02/08 | |



If semi could have front door to side with window to front (if paired with another gives impression of large detached house)

Drainage for shower



| ROOM | OVERALLS (m) | AREAS (sq m) |
|-----------------------|--------------|--------------|
| Living / Dining | 4.6 x 3.6 | 16.79 |
| Kitchen | 3.4 x 2.2 | 7.53 |
| Utility Room | 1.5 x 0.6 | 0.96 |
| Sub total | | 25.28 |
| Bedroom (main) | 4.1 x 2.6 | 10.90 |
| Bedroom 2 | 4.3 x 2.6 | 10.81 |
| Bath | 2.1 x 2.0 | 4.15 |
| Cloaks | 2.2 x 1.2 | 2.74 |
| En-suite / office | 2.6 x 1.8 | 4.05 |
| Storage / Circulation | | 15.45 |
| Shelving | | 3.54 |

Through floor lift

L.T. COMPLIANT

hrv = heat recovery ventilator at high level in cupboard still giving 1950mm height of storage