

- NOTES:**
1. DO NOT SCALE DRAWINGS.
 2. ALL WORK AND MATERIALS TO BE IN COMPLIANCE WITH ALL LOCAL CODES, BYLAWS AND REGULATIONS.
 3. ALL LUMBER PROVIDED BY DAC WILL BE BORATE AND HEAT TREATED
 4. ADDITIONAL DRAWINGS MAY BE ISSUED FOR CLARIFICATION TO ASSIST THE PROPER EXECUTION OF WORK. SUCH DRAWINGS WILL HAVE THE SAME MEANING & INTENT AS IF THEY WERE INCLUDED.
 5. THIS DRAWING IS THE EXCLUSIVE PROPERTY OF "DAC INTERNATIONAL" AND SHALL NOT BE REPRODUCED OR USED WITHOUT WRITTEN AUTHORISATION.

HQI (Core Areas)

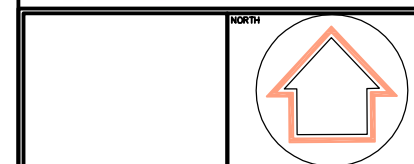
MIN REQUIRED:

Unit = 41
Layout = 32
Services = 22

ACTUAL:

Unit = 63
Layout = 67
Services = 61
GIFA = 78.51sqm (4.68%)

The Housing Corporation has not verified the HQI score and the HQI score is to be assessed for each individual development.



A	Housing Corporation audit check amendments	21.02.08
Rev.	ITEM	DATE

REVISIONS



3140 CARP ROAD, OTTAWA, ONTARIO
CANADA K0A 1L0
TEL: +1-613-839-0888
FAX: +1-613-839-0939
e-mail: dac@dac.ca

CLIENT/PROJECT NAME:

DAC 2.2 (C)

PROJECT NUMBER:

WO17 - 06

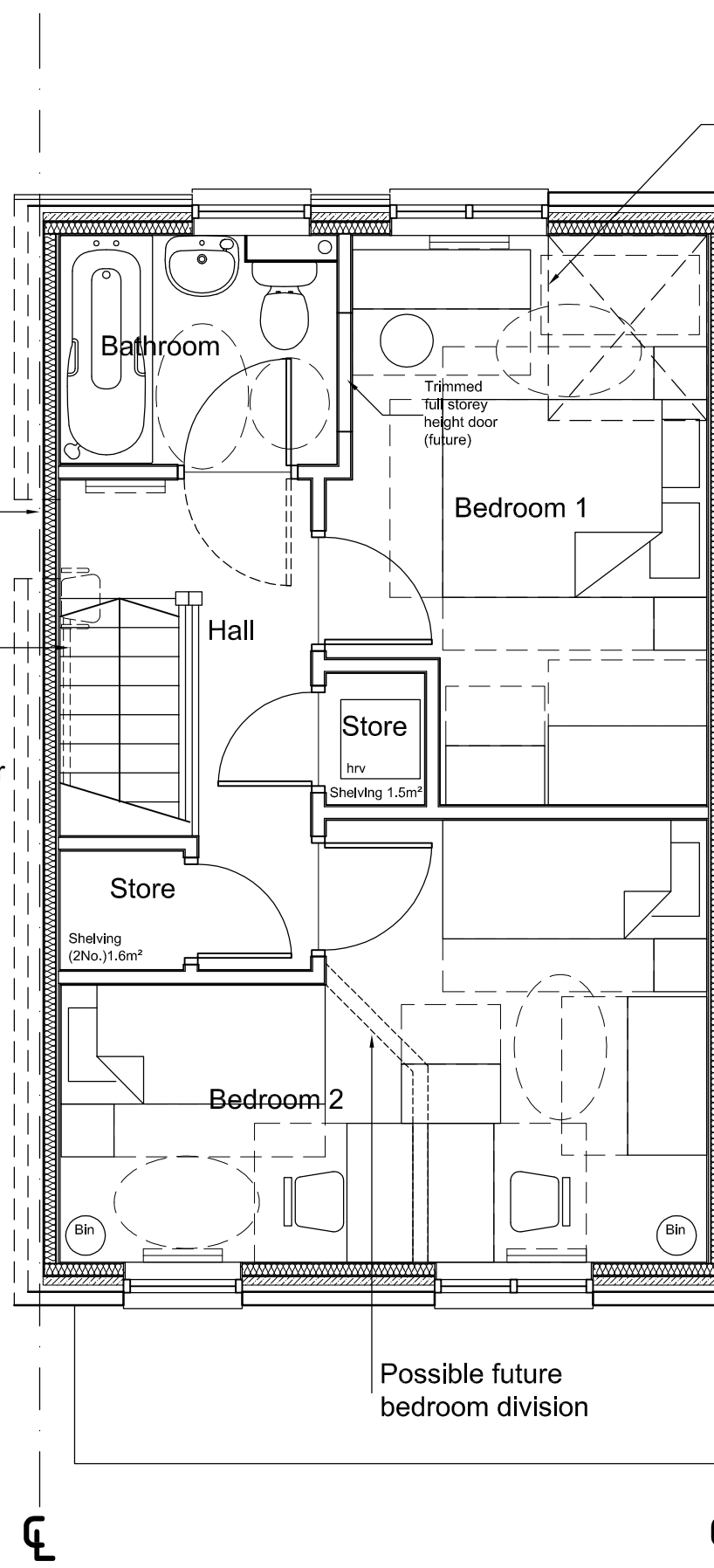
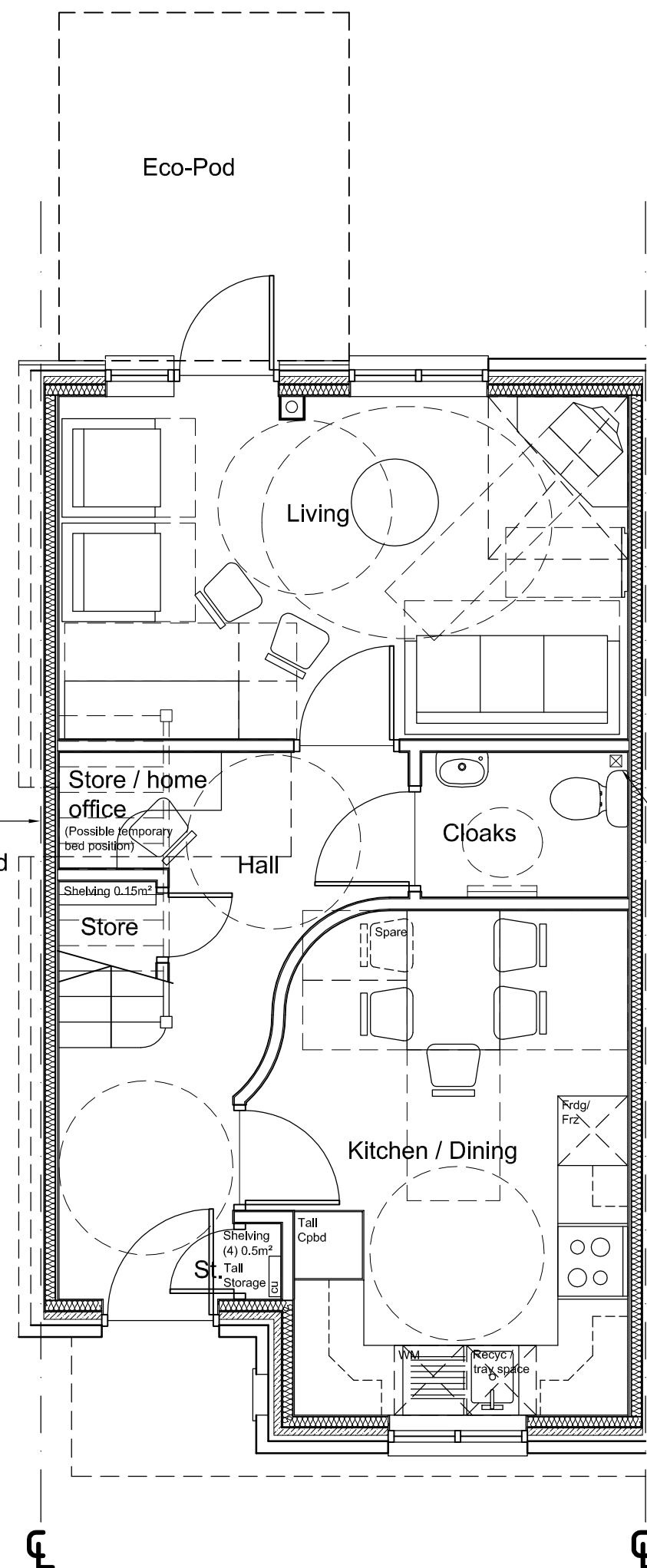
DRAWING NAME:

FURNITURE LAYOUT

SCALE:	DESIGN FOR:	DRAWING NUMBER:
1:50	DAC INT'L	2.2 (C)
DATE DRAWN:	CHECKED BY:	
DEC 2006	P.M.	
DESIGN & DRAWN BY:	LAST REVISION DATE:	
GJT	21/02/08	

1200 x 1400 trimmed for through floor lift

ROOM	OVERALLS (m)	AREAS (sq m)
Living	4.9 x 3.0	14.70
Kitchen / Dining	3.3 x 4.3	12.90
	Sub total	27.60
Bedroom (main)	4.3 x 2.8	11.11
Bedroom 2	4.9 x 3.3	13.88
Bath	2.1 x 1.7	3.64
Cloaks	1.7 x 1.2	2.13
Storage / Circulation		15.70
Shelving	0.48 + 1.6 + 1.5	3.75



Optional landing window if semi-detached

Possible stairlift

Drainage for shower

Possible future bedroom division

L.T. COMPLIANT

hrv = heat recovery ventilator at high level in cupboard still giving 1950mm height of storage