

- NOTES:**
1. DO NOT SCALE DRAWINGS.
 2. ALL WORK AND MATERIALS TO BE IN COMPLIANCE WITH ALL LOCAL CODES, BYLAWS AND REGULATIONS.
 3. ALL LUMBER PROVIDED BY DAC WILL BE BORATE AND HEAT TREATED
 4. ADDITIONAL DRAWINGS MAY BE ISSUED FOR CLARIFICATION TO ASSIST THE PROPER EXECUTION OF WORK. SUCH DRAWINGS WILL HAVE THE SAME MEANING & INTENT AS IF THEY WERE INCLUDED.
 5. THIS DRAWING IS THE EXCLUSIVE PROPERTY OF "DAC INTERNATIONAL" AND SHALL NOT BE REPRODUCED OR USED WITHOUT WRITTEN AUTHORISATION.

HQI (Core Areas)

MIN REQUIRED:

Unit = 41
 Layout = 32
 Services = 22

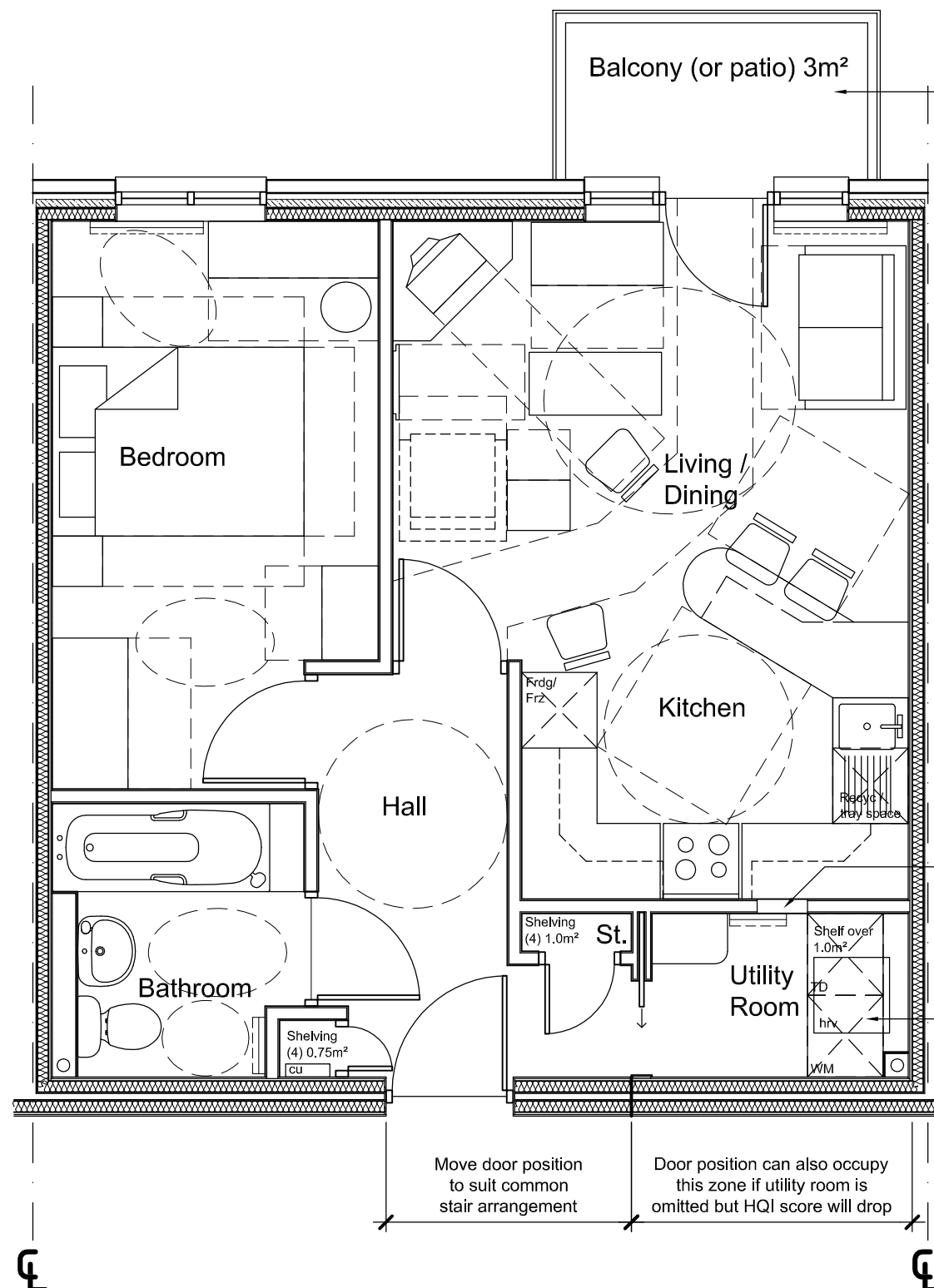
ACTUAL:

Unit = 45
 Layout = 64
 Services = 68
 GIFA = 46.20 sqm (2.7%)

The Housing Corporation has not verified the HQI score and the HQI score is to be assessed for each individual development.



ROOM	OVERALLS (m)	AREAS (sq m)
Living / Dining	4.0 x 3.6	14.96
Kitchen	3.0 x 1.7	5.29
Utility Room	2.0 x 1.3	2.64
	Sub total	22.89
Bedroom (main)	4.5 x 2.6	11.08
Bedroom 2	N/A	N/A
Bath	2.2 x 2.0	4.17
Storage / Circulation		5.95
Shelving		2.75



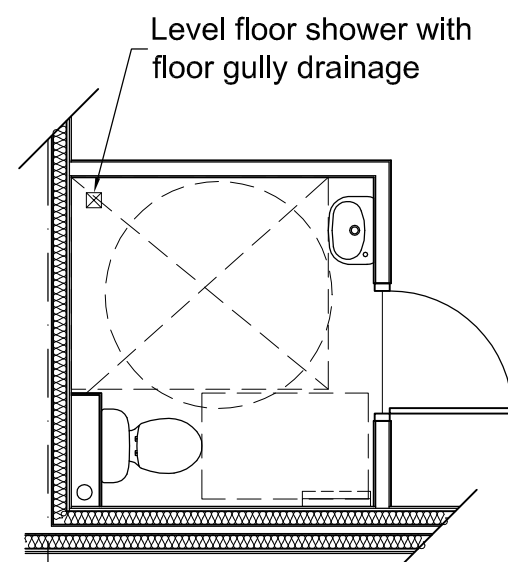
Free standing balcony option if limited amenity space

Wall hatch between kitchen and utility area

Additional appliance e.g. dishwasher in utility are by stacking washer and drier

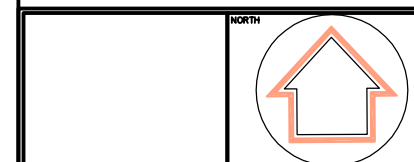
Move door position to suit common stair arrangement

Door position can also occupy this zone if utility room is omitted but HQI score will drop



Alternative shower room layout

L.T. COMPLIANT
(if ground floor unit)



A	Housing Corporation audit check amendments	21.02.08
Rev.	ITEM	DATE

REVISIONS



3140 CARP ROAD, OTTAWA, ONTARIO
 CANADA K0A 1L0
 TEL: +1-613-839-0888
 FAX: +1-613-839-0939
 e-mail: dac@dac.ca

CLIENT/PROJECT NAME:

DAC 1.2
 FLAT LAYOUT

PROJECT NUMBER:

WO17 - 06

DRAWING NAME:

FURNITURE LAYOUT

SCALE:	DESIGN FOR:	DRAWING NUMBER:
1:50	DAC INT'L	1.2
DATE DRAWN:	CHECKED BY:	
DEC 2006	P.M.	
DESIGN & DRAWN BY:	LAST REVISION DATE:	
GJT	21/02/08	